

SCPDC

South Central Planning & Development Commission

Serving the parishes of Assumption, Lafourche, St. Charles, St. James, St. John the Baptist, St. Mary, and Terrebonne

Quarterly Newsletter



April 20, 2023 | Issue 11

Economic Development Administration Visits South Central Region



Pictured: At the LUMCON new construction in East Houma-From left to right is Kevin Belanger, CEO SCPDC, Ileana Ledet EDA State Representative, Patrick Gordon, Chief Planning Officer SCPDC, and Jorge Ayala, EDA Regional Director out of Austin, TX

Economic Development Administration's State and Federal Representatives visited the South Central Planning Region to inspect and monitor the completion or progress of 7 EDA projects within our region. These representatives also came to develop new projects within the region. All projects include but are not limited to Infrastructure Improvements, Workforce Training, and the Revolving Loan Program. Over \$10 Million in projects are currently underway with more on the horizon.



Pictured: At Port of Terrebonne-From Left is Apu Naik, FEMA EDA LA Rep, David Rabalis, Terrebonne Port Director, Kevin Belanger, CEO SCPDC, Jorge Ayala, EDA Regional Director out of Austin, TX, and Patrick Gordon, Chief Planning Officer SCPDC

Ribbon Cutting at Baldwin Training Facility

Port of West St. Mary & South Louisiana Community College



The Port of South Louisiana and the South Louisiana Community College held a joint ribbon cutting at a brand new training center in Baldwin. The new training center, constructed via a \$1.3 million Economic Development Administration grant matched by local and state funds, was developed via a partnership between the two organizations and the South Central Planning and Development Commission. The Port oversaw all design and construction activities for the center that will ultimately be used by SLCC for job and vocational training. SCPDC administered the grant for the port commission and ensured the contractor complied with federal wage rates.

44th Annual Lantern Awards

Baton Rouge, LA

On February 8, 2023 at the Hilton Baton Rouge Capitol Center Cospolich Inc. was awarded the 2022 Lantern Award for the South Central Region of Louisiana. Louisiana Economic Development and Louisiana Association of Planning and Development Districts presented these awards to celebrate the spirit of excellence in business. Lantern Award winners receive



copper lanterns donated by Bevollo Gas and Electric Lights of New Orleans and created by the company's skilled craftsmen. Kevin Belanger, CEO and Patrick Gordon, CPO with South Central Planning and Development Commission were present with Parish President Matt Jewell and Corey Fauchaux, St. Charles Economic Development Director for the Ceremony.

LA Transportation Conference

Baton Rouge, LA



Planners Josh Manning, Cassie Parker, Thomas Rhodes, and Jonathan Eastwood attended LA Department of Transportation & Development's 2023 Louisiana Transportation Conference in Baton Rouge, LA. They, along with hundreds of other transportation planning professionals throughout the state were provided an opportunity to network and gain knowledge on various transportation trends, tools,

federal and state funding sources, planning for resilience and sustainability, innovative technologies and design, ITS operations and data management, infrastructure projects on our roads and bridges, passenger rail and many other transportation topics.

National Planning Conference

Philadelphia, PA

Lesley Long and Lea Ann Rucker, Region Planners at the SCPDC, had an incredible time attending the 2023 National Planning Conference in Philadelphia! The conference focused on digitalization, population diversity, inclusion, upskilling, transportation, and affordable housing. The conference attracted planners from across the country who were eager to learn about the latest trends and innovations in the field.

Over the course of the conference, they learned about the critical importance of technology and digitalization in planning and development. The planners also had engaging discussions about the importance of inclusivity and diversity in planning, and how to ensure that everyone has access to safe, affordable housing.

In addition to the great talks and discussions, the conference also included some wonderful opportunities for networking and socializing. They took a tour of the city and got to see some of Philadelphia's most iconic landmarks, including Benjamin Franklin's grave, the Rocky statue, and the Liberty Bell.

All in all, the conference was a great success. They made valuable connections and learned a lot.



CARES Act Funding

South Central Region

As of the March 21st meeting of the SCPDC Loan Board, all \$5,000,000 in CARES Act loan funds have been allocated in the South Central Region: Terrebonne (18), Lafourche (11), St Mary (3), St Charles (1). Additionally, borrowers both within and outside the South Central

Region have benefitted from SCPDC's other loan programs to start or expand their small businesses. Since the beginning of 2023, the SCPDC Loan Board has approved just over \$1.5 million in loans to 9 small businesses across all loan funds in Assumption, Lafourche, St Mary, and Terrebonne Parishes. Types of businesses include professional services, essential retail, construction, self service housekeeping, food service, recreation, and residential services.

As anticipated, in a joint effort between the SCPDC Grant & Loan and Legal & Special Projects departments, we will be contracting with Louisiana's Office of Community Development, as we have for past disasters, to provide relief to small businesses across the Hurricane Ida AND Hurricanes Laura and Delta disaster declared areas. We anticipate offering applications beginning 5/1/2023. The state, in coordination with the federal government, typically takes 2 years or more to begin providing these program services, but it appears they are on track to get this done much sooner than that for Ida. For more detailed info from the state for this program, please visit <https://www.restore.la.gov/small-business-loan-program>

For more information or to apply for our regular (non-recovery) small business loan programs, please visit our website at <https://www.scpdc.org/departments/planning/economic-development-2/loans/> or contact us by phone at 985.655.1051. Information regarding the upcoming recovery loans for small businesses will also be available via this webpage when it becomes available.

Small Business Recovery Program Fund

IMPACTED BY **HURRICANE IDA**
OR FLOOD OF 2021

0% INTEREST
&
40% FORGIVABLE

**SMALL BUSINESS
RECOVERY PROGRAM FUNDS**

1-800-630-3791 OR SCPDC.ORG

SCPDC
South Central Planning &
Development Commission

LOUISIANA
OFFICE OF
COMMUNITY
DEVELOPMENT

RESTORE

Funded through the Community Development Block Grant Disaster Recovery
Program from the U.S. Department of Housing and Urban Development

South Central Planning and Development was allocated 63.5 (\$37.5M Laura/Delta and \$25M Ida) of 95 Million in available funding to assist small business owners in impacted areas across the state.

The program will start accepting application from May 1, 2023 through December 31, 2023.

IMPACTED BY **HURRICANES LAURA**
OR **DELTA**

0% INTEREST
&
40% FORGIVABLE

**SMALL BUSINESS
RECOVERY PROGRAM FUNDS**

1-800-630-3791 OR SCPDC.ORG

SCPDC
South Central Planning &
Development Commission

LOUISIANA
OFFICE OF
COMMUNITY
DEVELOPMENT

RESTORE

Funded through the Community Development Block Grant Disaster Recovery
Program from the U.S. Department of Housing and Urban Development

South Central's First Drone Pilot

We are thrilled to announce that we have our first licensed drone pilot! With Jonathan Eastwood's expertise, we are now able to expand our aerial services, providing high-quality photos of ongoing projects. Jonathan has undergone rigorous training and has passed the Federal Aviation Administration's



certification process, ensuring that he is fully qualified to operate drones for commercial purposes. We are confident that his skills and knowledge will greatly benefit our team and we are excited to see what the future holds with Jonathan on board.



Houma-Terrebonne Airport Commission

Completes First Phase of Gulf of Mexico Unmanned Aircraft Systems Center of Excellence

The Houma-Terrebonne Airport Commission has completed construction on the first phase of the *Gulf of Mexico Unmanned Aircraft Systems Center of Excellence* using a mix of Economic Development Administration and local funding.

The first phase of the project is the construction of a landing pad for unmanned aerial vehicles. This pad is part of a much larger program the airport commission expects will drastically change the dynamic of airport operations in the future by expanding services to unmanned and automated air travel. The Center is expected to bring innovation to the region by creating opportunities in clean energy technology. It is envisioned to be a public-private partnership between the airport, academic centers including Nicholls State University and Fletcher Community College, and other governmental and private industry partners for the purpose of UAS training, testing, and future operations.



The airport received \$1.35 million dollar EDA grant to assist with construction of the facility. SCPDC administered the grant for the airport as well as ensured labor compliance. The Commission is currently working with the airport for the next round of EDA funding to continue to complete the project.

Economic Development Administration

Notice of Funding Opportunity

The Economic Development Administration has published its latest Notice of Funding Opportunity for the 2023 Public Works and Economic Adjustment Assistance. From the NOFO:

EDA intends to review applications expeditiously upon receipt of the complete application. There are no application submission deadlines. Applications will be accepted on an ongoing basis until the publication of a new PWEAA NOFO, cancellation of this PWEAA NOFO, or all available funds have been expended.

This NOFO sets out EDA's application submission and review procedures for two of EDA's core economic development programs authorized under the Public Works and Economic Development Act of 1965, as amended (42 U.S.C. § 3121 et seq.) (PWEDA): (1) Public Works and Economic Development Facilities (Public Works) and (2) Economic Adjustment Assistance (EAA).



EDA supports bottom-up strategies that build on regional assets to spur economic growth and resiliency. EDA encourages its grantees throughout the country to develop initiatives that present new ideas and creative approaches to advance economic prosperity in distressed communities.

Through this NOFO EDA intends to advance general economic development in accordance with EDA's investment priorities, but also to pursue projects that, where practicable, incorporate specific priorities related to equity, workforce development, and climate change resiliency so that investments can benefit everyone for decades to come.

Please access this opportunity at: <https://www.grants.gov/web/grants/view-opportunity.html?oppId=346815>.

The FY 2023 PWEAA NOFO supersedes EDA's FY2020 PWEAA NOFO.

SCPDC staff is available to assist partner organization identify and apply for quality EDA projects. These projects require a local match of 20%. For more information, please contact Joshua Manning at josh@scpd.org.

South Central's Brownfields Program

EPA
Brownfields

SCPDC
Brownfields

For more information



on SCPDC's
Brownfields Program,
contact our
Brownfields Program
Manager Lesley Long
at lesley@scpd.org or
(985) 851-2900.

South Central Planning and Development Commission (SCPDC) Brownfields Program works to assess, clean up, and facilitate the redevelopment and/or reuse of potentially contaminated properties known as brownfields.

Louisiana Transportation Alternative Program

SCPDC assists parishes to apply for project funding

South Central Planning & Development Commission's Planning Department staff assisted the parishes of Assumption and St. Mary with Transportation Alternative Program applications to improve connectivity and safety for non-motorized users.

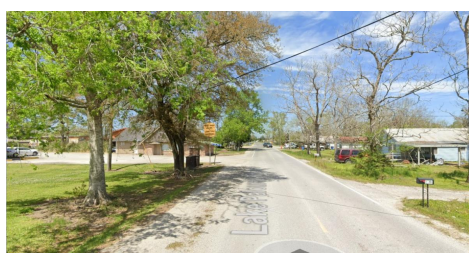


Assumption Parish: Belle Rose Sidewalks **Project Cost Estimate: \$1,064,000.00**

The proposed project consists of installation of sidewalks along Highway 998 LA 1, and LA 308 which will connect to the Highway 998 pedestrian bridge. This project will be one of three phases identified in LSU Ag Center's Complete Streets Plan for Assumption Parish and will provide safer connectivity for non-motorized community members to travel to the primary and middle schools, the public library, and other community businesses.

Assumption Parish: Highway 403 Sidewalk **Project Cost Estimate: \$283,800.00**

The proposed project will consist of the installation of a sidewalk along Highway 403 and will connect residential neighborhoods to the nearby park, churches, schools, the post office and local commerce stores within the community of Paincourtville.



St. Mary Parish: Amelia Sidewalks **Project Cost Estimate: \$946,910.00**

The proposed sidewalk projects will provide safer connectivity for walkers and bikers to safely reach their destinations along the following roadways: Beadle Street and Degraville Road; Various locations along Lake Palourde Road; North Verret Street, South Verret Street, First Street; and Sunnyside Park to Amelia Community Center.

Traffic Counting Program

After a hiatus due to COVID-19 and then Hurricane Ida, SCPDC's traffic counting program is now back in full swing! Traffic counts are taken throughout the region, though primarily in the MPO area, by the Planning Department to provide inputs to the regional Travel Demand Model, as well as to provide information to member governments. Many economic developers, real estate agents, and other community stakeholders often find this information to be useful for a variety of reasons.



Traffic Count Database

My Government Online

Our first MGO Connect National Conference was a success with over 250 registrations from participants throughout the country. We love having the opportunity to show agencies the benefits of using our software to streamline their workflow.



Anything you can do in-person at your local office you can do online. Examples include Apply for Permits, Pay Online, Request Inspections, Submit Files, Download Inspection Reports and Approved Plans, Check Status of a Permit, Download Permit Data, Search for Permits, Manage Contractor and Business Licenses. Visit <https://www.mygovernmentonline.org/> for more information.

Our MGO team participates in many conferences, here are just a few of those:



Louisiana Floodplain Management Association - LFMA Technical & Business Conference



Annual BOAL conference in Lake Charles, LA



Building Professional Institute Conference in Houston, TX

U.S. DOT Awards SCPDC \$400,000 *Safe Streets and Roads for All Action Plan Funding*

The Bipartisan Infrastructure Law (BIL) established Safe Streets and Roads for All (SS4A) discretionary program with \$5 billion in appropriated funds over 5 years to fund regional, local, and Tribal initiatives through grants to prevent roadway deaths and serious injuries.

SCPDC was awarded \$400k from the U.S. Department of Transportation to develop a comprehensive safety action plan for the Houma-Thibodaux Metropolitan Planning Organization (HTMPO) area which includes the urbanized areas of Assumption, Lafourche and Terrebonne parishes. Key components of the action plan are:

Leadership commitment and goal setting that includes a goal timeline for eliminating roadway fatalities and serious injuries.

Planning structure through a committee, task force, implementation group, or similar body charged with oversight of the Action Plan development, implementation, and monitoring.

Safety analysis of the existing conditions and historical trends that provides a baseline level of crashes involving fatalities and serious injuries across a jurisdiction, locality, Tribe, or region.

Engagement and collaboration with the public and relevant stakeholders, including the private sector and community groups, that allows for both community representation and feedback.

Equity considerations developed through a plan using inclusive and representative processes.

Policy and process changes that assess the current policies, plans, guidelines, and/or standards to identify opportunities to improve how processes prioritize transportation safety.

Strategy and project selections that identify a comprehensive set of projects and strategies, shaped by data, the best available evidence and noteworthy practices, as well as stakeholder input and equity considerations, that will address the safety problems described in the Action Plan.

Progress and transparency methods that measure progress over time after an Action Plan is developed or updated, including outcome data.



U.S. Department of Transportation

**Bipartisan Infrastructure
Law**

**Federal Programs
*Available to the Locals***

On November 15, 2021, President Biden signed the Infrastructure Investment and Jobs Act (IIJA) (Public Law 117-58, also known as the "Bipartisan Infrastructure Law" or BIL) into law. The Bipartisan Infrastructure Law is the largest long-term investment in our infrastructure and economy in our Nation's history. It provides \$550 billion over fiscal years 2022 through 2026 in new Federal investment in infrastructure, including in roads, bridges, and mass transit, water infrastructure, resilience, and broadband.

- Click here to visit the [FHWA BIL Website](#).
- Click here to visit the [USDOT BIL Website](#).



Federal Highway Programs Available to Local Agencies (LPA)

LTAP has produced a helpful brochure that provides a list of federal highway programs that local public agencies (LPA) can apply for funding for or have access to.

Agencies that use federal and state dollars for transportation projects are required to take the LPA Training Program provided by LTAP in partnership with FHWA and DOTD.

[Download Brochure](#)



LTAP offers various training programs that offer cost-effective learning for local transportation and public works agencies on topics that range from road and bridge maintenance to roadway safety, worker safety, emergency preparedness, crash data analysis, etc. [Download Training Resources](#)

LPA

Local Public Agency (LPA) Training Program



[Visit LTAP for more information](#)

Any local public agency that utilizes federal and state transportation dollars is required to attend the LPA Qualification Core Training. [Download Brochure](#).

Sign Up for LTAP's Newsletters and Training Announcements [HERE](#).

South Central Regional Safety Coalition

Program Coordinator: [Cassie Parker](#)

South Central Regional Safety Coalition (SCRSC) is a traffic safety coalition comprised of multidisciplinary partners/agencies throughout the parishes of Assumption, Lafourche, St. Charles, St. James, St. John the Baptist, and Terrebonne.

[Learn More](#)



Regional Child Passenger Safety Efforts

Many parents may not even be aware that their child is not in the correct child seat, booster seat or that the seat is not installed properly. Please encourage families with children to visit one of the many fitting stations throughout the region.

Certified Child Passenger Safety Technicians are able to provide education to parents and caregivers. Fitting Station information can be located here: <https://bit.ly/3VtT3sa> or visit [Buckle Up Louisiana's Facebook page](#) for the most up to date information on Child Passenger Safety.



Free child safety seat installation



Assistance with child safety seats is offered free in Louisiana! Join nationally certified technicians as we work to reduce serious injuries and fatalities in children by making sure your child's safety seats are installed properly.

Next safety seat installation

Saturday, April 29, 2023

10:00 am- 2:00 pm

Bayou Country Children's Museum

211 Rue Bethancourt

Thibodaux, LA 70301



Follow us on Facebook: [Buckle Up Louisiana](#)

Our team can teach you how to

- Select the proper child restraint
- Ensure that your child is placed into the restraint properly
- Ensure that the restraint is correctly installed in your vehicle

Motor vehicle crashes are the #1 killer of children

Learn to use your seat correctly!

10-2019-0097



Annual Child Passenger Safety Conference

Thursday, July 20, 2023

8am – 4pm (Sign In opens at 7am)

Crowne Plaza Baton Rouge

4728 Constitution Ave

Baton Rouge, LA 70808

All 6 required CEUs for recertification will be provided

Registration link coming soon by email. Please make sure your email address is current with our office.

This conference is free to all in compliance with the LPSTF. A light breakfast and lunch will be provided.

Free Child Safety Seat Event
Saturday, April 29th
Thibodaux, LA

LPSTF CEU Conference
Thursday, July 20th

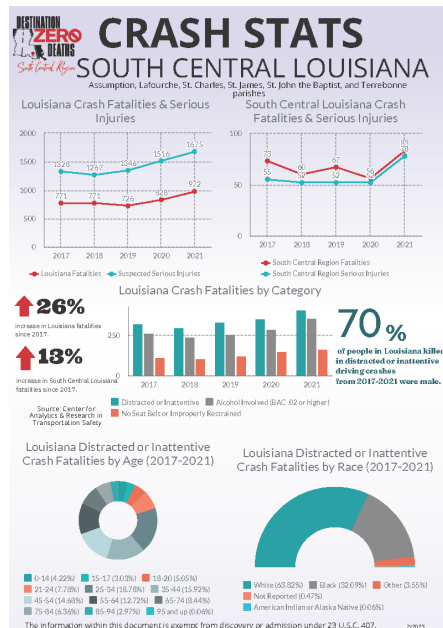
South Central Law Enforcement Team Up to Educate

Promoting Seat Belt Use & Combatting Distracted Driving at NSU

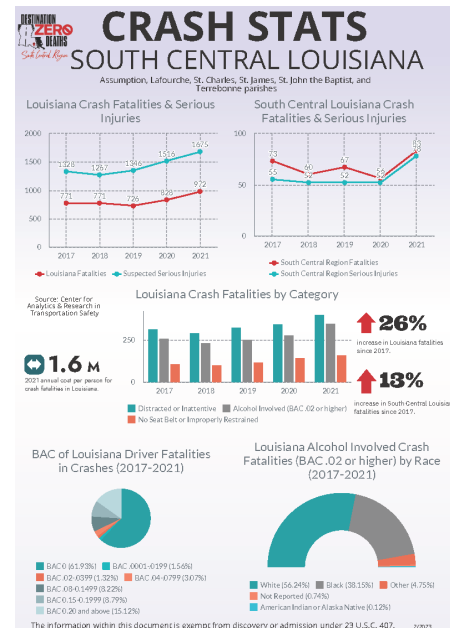


Motor vehicle crashes are the leading cause of death among our youth. Our South Central Regional Safety Coalition's state and local law enforcement teamed up in an effort to increase seat belt use and reduce distracted driving by conducting a Young Drivers Observational Event at Nicholls State University.

This collaborative effort between Nicholls State University PD, Lafourche Parish Sheriff's Office, Terrebonne Parish Sheriff's Office, Thibodaux Police Department, LSP-C and SCPDC provides an opportunity for law enforcement to interact and educate young adults on the importance of buckling up and avoiding distractions while behind the wheel. Pre and post observations are conducted prior and after the educational event and checkpoint to gather data on drivers not wearing seatbelts and/or distracted driving. The team effort yielded positive results, data showing an 11.4% decrease in drivers not restrained and 32.3% decrease in distracted drivers.



Distracted Driving Fact Sheet
South Central, LA

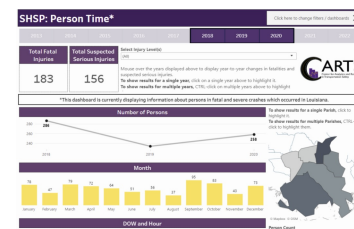


Impaired Driving Fact Sheet
South Central, LA

Crash Data Dashboard Training Available!

Regional data available in user friendly dashboards

LSU Center for Analytics and Research in Traffic Safety (CARTS), in collaboration with the Louisiana Department of Transportation and Development (LADOTD) created user-friendly crash data dashboards that are used in Louisiana's Strategic Highway Safety Plan efforts. Numerous filters allow users to sort data by injury level, location, demographics, contributing factors, and more.



If you are interested in hosting a Crash Data Dashboard Training in person or via Zoom, please contact Cassie Parker at cassie@scpd.org.

LSU CARTS SHSP Crash Data Dashboards

South Central Planning & Development Commission

Upcoming Meetings

SCPDC Calendar of Events

SCPDC Board Meeting - 10:30 AM

Thursday, April 20, 2023

Thursday, June 22, 2023

Thursday, October 19, 2023

Contact: Emma Bergeron, emma@scpd.org

SCPDC Loan Board Meeting - 8:30 AM

Third Tuesday of each month

Contact: Missy Menuet, MissyM@scpd.org

Region 6 Watershed Meeting - 10 AM

4th Wednesday of each month

Contact: Pat Gordon, pat@scpd.org

HTMPO Policy Committee - 12 PM

Thursday, May 4, 2023

Thursday, July 27, 2023

Thursday, October 26, 2023

Contact: Joshua Manning, josh@scpd.org

Print SCPDC Meeting Calendar

HTMPO Technical Advisory Committee - 10 AM

Thursday, June 8, 2023

Thursday, September 14, 2023

Thursday, December 14, 2023

Contact: Joshua Manning, josh@scpd.org

Regional Transit Committee - 10 AM

Wednesday, May 17, 2023

Wednesday, August 16, 2023

Wednesday, November 15, 2023

Contact: Joshua Manning, josh@scpd.org

South Central Regional Safety Coalition - 10 AM

Thursday, May 18, 2023

Thursday, August 17, 2023

Thursday, November 16, 2023

Contact: Cassie Parker, cassie@scpd.org

for emphasis area meetings.

Any Parish or Municipality that wants to share regional activities they're promoting, we will give them access to our Newsletter as a medium. For more information about the Newsletter please contact Ms. Cassie Parker at cassie@scpd.org.

South Central Planning & Development
5058 West Main Street, Houma, LA 70364
985-851-2900 | www.scpdc.org

